

# Delfino

## 65

No wave too high...

This beautiful trawler yacht, with its elegant, traditional profile, is a real beauty to behold! The beauty and simplicity of this mini-Super Yacht, built as standard under CE-A classification, makes it the jewel of any marina. With two engine rooms, three/four extremely spacious cabins, three bathrooms, a visitors toilet, an office/library, a large living room with a rear deck, a galley kitchen and a very large wheel house, all as standard, this yacht is not only a work of art, but the very dream of many a sailor. In short, it is a real ship of ample size, which is easy to sail and as seaworthy as the sturdiest vessels around. The spacious and luxurious, yet still traditionally nautical-looking interior, that can be adjusted to precisely suit the specifications of the client, can make the dream of the eternal holiday a reality for anyone.

This model is the demo boat and meanwhile no. 4 is under construction. The success of this boat is the perfect harmony between lines, length, robustness and elegance. We will be happy to send you a DVD with photographs of the 4 different yachts.

## Specification

<b>Category</b>	Motor yachts
<b>Designer</b>	Werner Yachtdesign, Volendam, The Netherlands
<b>Material</b>	Steel
<b>CE-certification</b>	A
<b>Material</b>	Steel
<b>Length</b>	20-25



### Jachtbouw De Alm

Industrieweg 43  
5145 PD Waalwijk  
The Netherlands

**Contact**

Mr. Jacco van Maastricht

**Phone** +31 183503196

**Fax**

[info@alm-jachtbouw.nl](mailto:info@alm-jachtbouw.nl)

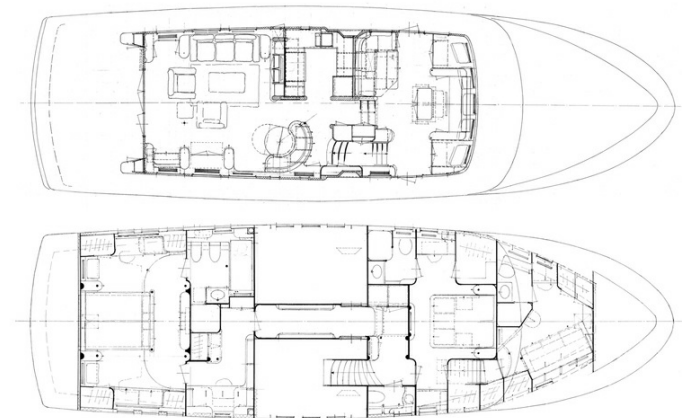
<http://www.alm-jachtbouw.nl>











Alm Trawler  
**DELFINO 65**

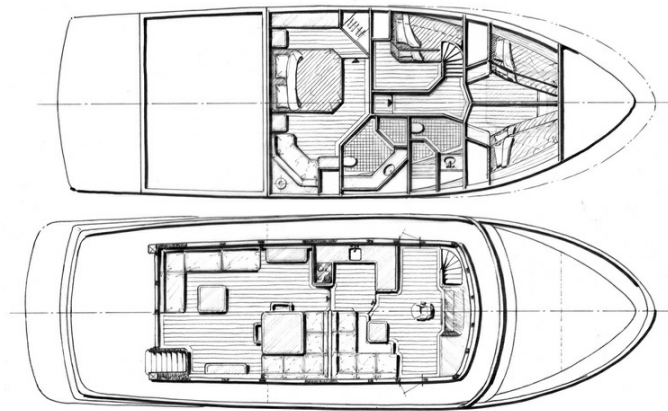


Alm Trawler  
**DELFINO 57**









Alm Trawler  
**DELFINO 57**

